

brand **Flymo**

date **18.12.2003** Sheet **1/2**

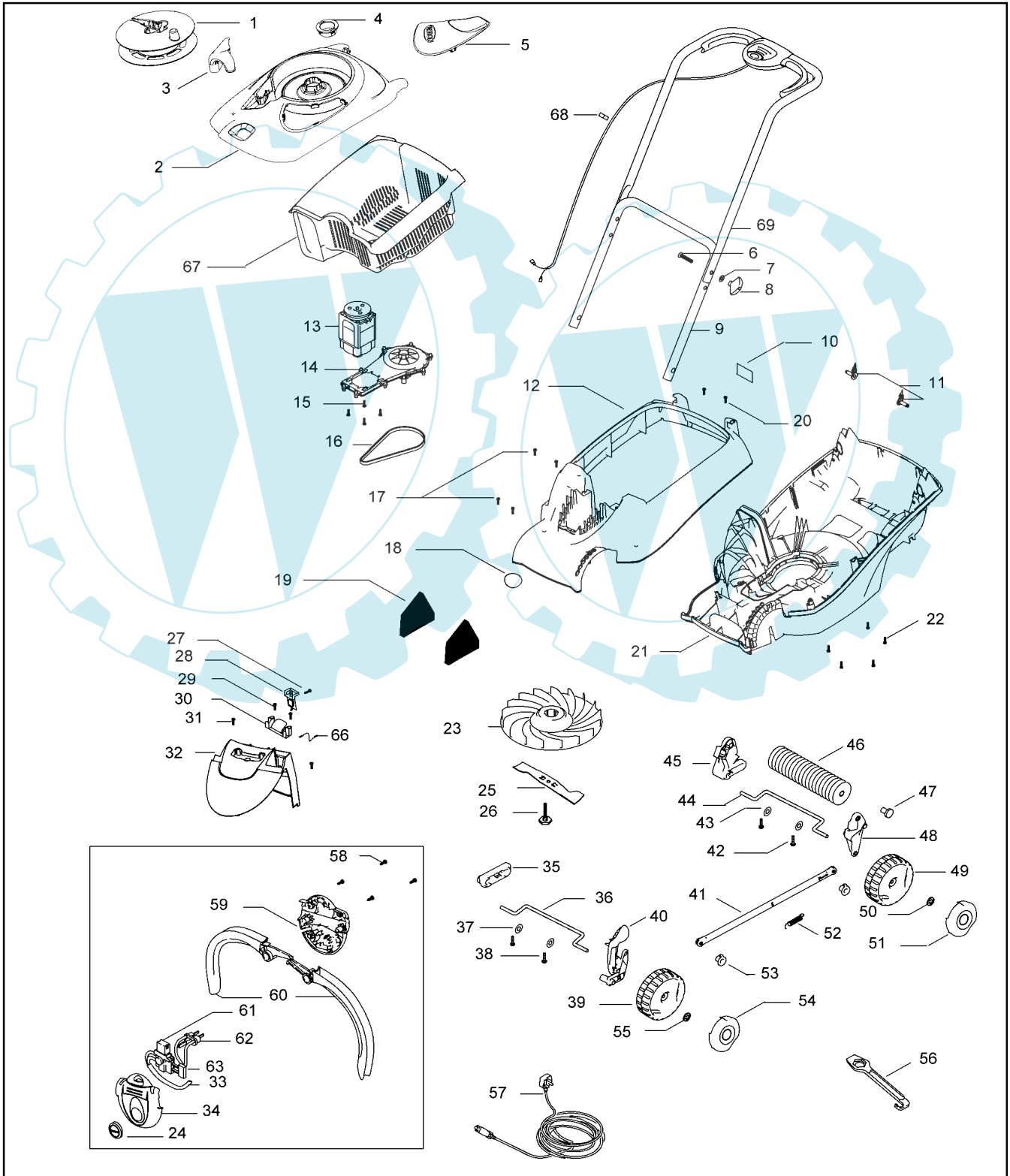
Publication No. **AP0312007**

Model

Roller compact 4000
Roller compact 4000

Product Number

9644406-01 (UK)
9644406-62 (Eu)



brand | Flymo

date | 18.12.2003 | Sheet 2/2

Roller Compact 4000

| pos | Part No | Description | Qty | pos | Part No | Description | Qty |
|-----|----------------|------------------------|-----|-----|------------------|--------------------------|-----|
| 1 | 5128232-00/5 | Spool assy | 1 | 39 | 5128201-00/0 | Wheel | 2 |
| 2 | 5119657-00/4 | Lid assy | 1 | 40 | 5128200-00/2 | Height adjustment arm | 1 |
| | | include * items | | | | | |
| 3 | * 5128223-00/4 | Cable guide | 1 | 41 | 5128182-00/2 | Link rod | 1 |
| 4 | * 5131128-00/0 | Bearing moulded | 1 | 42 | 5149753-01/3 | Screw | 2 |
| 5 | * 5119581-00/6 | Vision window | 1 | 43 | 5139189-00/4 | Washer | 2 |
| 6 | 5149198-01/1 | Bolt | 2 | 44 | 5128199-00/6 | Axle | 1 |
| 7 | 5140266-00/7 | Washer | 2 | 45 | 5128205-00/1 | Spacer Rear RH | 1 |
| 8 | 5107091-64/6 | Wing knob | 2 | 46 | 5128204-00/4 | Roller | 1 |
| 9 | 5118323-00/4 | Handle lower | 1 | 47 | 5130789-00/1 | Roller pin | 2 |
| 10 | 5138587-00/0 | Label, warning | 1 | 48 | 5128203-00/6 | Spacer Rear LH | 1 |
| 11 | 5130680-00/1 | Handle fix | 2 | 49 | 5128206-00/9 | Wheel | 2 |
| 12 | 5107100-00/9 | Deck upper | 1 | 50 | 5149680-00/0 | Starlock washer | 2 |
| 13 | 5119655-00/8 | Motor | 1 | 51 | 5128207-00/7 | Hub cap | 2 |
| 14 | 5119595-00/6 | Drive assy | 1 | 52 | 5131090-00/2 | Spring | 1 |
| 15 | 5139608-03-7 | Screw | 4 | 53 | 5131091-00/0 | Pin | 2 |
| 16 | 5131073-00/8 | Belt | 1 | 54 | 5128202-00/8 | Hub cap | 2 |
| 17 | 5149753-01/3 | Screw | 4 | 55 | 5149680-00/0 | Starlock washer | 2 |
| 18 | 5131139-00/7 | Badge | 1 | 56 | 5127933-00/9 | Spanner | 1 |
| 19 | 5131092-00/8 | Filter | 2 | 57 | 5127250-03/2 | Cable | 1 |
| 20 | 5149753-01/3 | Screw | 2 | 58 | 5130873-00/2 | Screw | 4 |
| 21 | 5107099-00/3 | Deck lower | 1 | 59 | UK, 5119457-68/6 | Switchbox lower | 1 |
| 22 | 5139608-00/3 | Screw | 5 | | Eu 5119458-68/4 | Switchbox lower | 1 |
| 23 | 5119481-00/9 | Impeller | 1 | 60 | 5130896-00/3 | Levers kit | 1 |
| 24 | 5131030-64/4 | Button, lock off | 1 | 61 | 5130504-00/3 | Switch | 1 |
| 25 | 5119480-00/1 | Blade | 1 | 62 | UK 5127696-00/2 | Pin retainer | 1 |
| 26 | 5137608-00/5 | Blade bolt | 1 | | Eu 5131117-00/3 | Pin retainer | 1 |
| 27 | 5130755-00/1 | Screw | 1 | 63 | 5148397-01/0 | Capacitor | 1 |
| 28 | 5130747-00/8 | Switch/bracket assy | 1 | 66 | 5130700-00/7 | Cowl Lead assy | 1 |
| 29 | 5149753-01/3 | Screw | 2 | 67 | 5107102-00/5 | Grass basket | 1 |
| 30 | 5127871-00/1 | Lid latch | 1 | 68 | 5138574-00/8 | Cable clip | 2 |
| 31 | 5149753-01/3 | Screw | 2 | 69 | 5118303-00/6 | Handle, upper | 1 |
| 32 | 5107101-00/7 | Motor cowl | 1 | | | | |
| 33 | 5130710-01/4 | Lead assy | 1 | | | | |
| 34 | 5119456-68/8 | Switchbox upper | 1 | | | | |
| 35 | 5131089-00/4 | Spacer, front RH | 1 | | | | |
| 36 | 5128199-00/6 | Axle | 1 | | | | |
| 37 | 5139189-00/4 | Washer | 2 | | | | |
| 38 | 5149753-01/3 | Screw | 2 | | | | |